

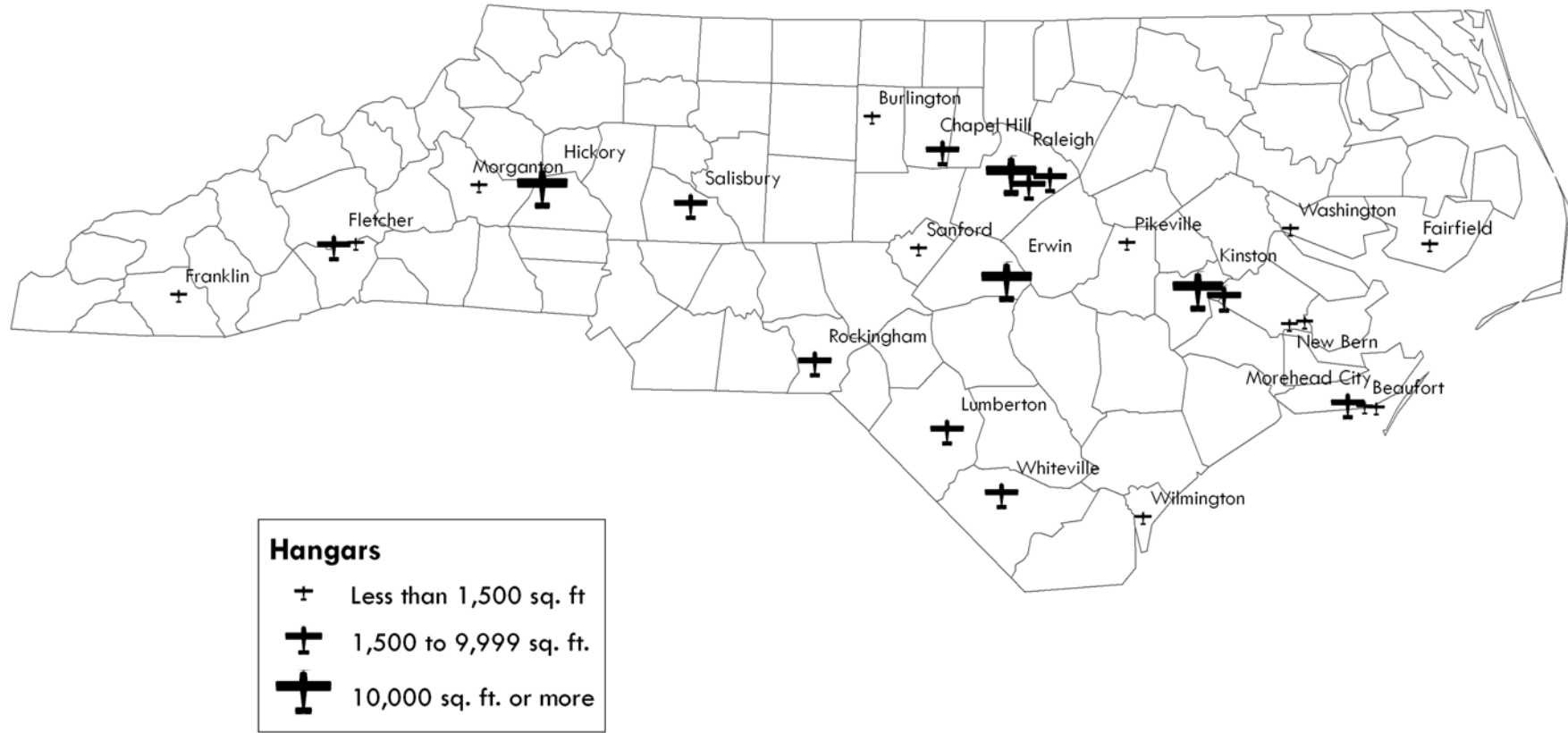
## Aviation Program Features by Category: Aircraft, Facilities, Personnel, and Cost for Fiscal Year 2008-09

State Program	Aircraft	Facilities (Location)	Personnel	Cost of Aviation Program FY 08-09
<b>Passenger Transport</b>				
Area Health Education Centers	6 twin engine	1 (Chapel Hill)	5 pilots 3 mechanics 2 administrative support	\$ 1,465,332
Department of Commerce	1 jet 1 twin engine 1 helicopter	1 (Raleigh)	5 pilots 2 mechanics 1 administrative support	1,570,084
Department of Transportation	3 twin engine	1 (Raleigh)	1 director 3 pilots 2 mechanics 1 administrative support	1,340,245
<b>Subtotal</b>	<b>12</b>	<b>2</b>	<b>25</b>	<b>4,375,661</b>
<b>Law Enforcement</b>				
State Bureau of Investigation	2 single engine 1 twin engine	1 (Erwin)	2 pilots	449,550
State Highway Patrol	9 helicopters	5 (Fletcher, Kinston, Raleigh (2), Salisbury)	21 pilots 3 mechanics	2,160,271
Division of Marine Fisheries	3 single engine 3 helicopters	4 (Beaufort (2), Morehead City, Wilmington)	3 pilots	216,127
Wildlife Resources Commission	4 single engine	4 (Burlington, Morganton, New Bern, Pikeville)	4 pilots	138,529
<b>Subtotal</b>	<b>22</b>	<b>14</b>	<b>33</b>	<b>2,964,477</b>
<b>Resource Protection</b>				
Division of Forest Resources	29 single engine 2 twin engine 7 helicopters	11 (Fairfield, Fletcher, Franklin, Hickory, Kinston, Lumberton, New Bern, Rockingham, Sanford, Washington, Whiteville)	20 pilots 10 mechanics 1 avionics technician	3,462,412
<b>Subtotal</b>	<b>38</b>	<b>11</b>	<b>31</b>	<b>3,462,412</b>
<b>Statewide Total</b>	<b>72</b>	<b>27</b>	<b>89</b>	<b>\$ 10,802,550</b>

Note: Three aircraft have been sold since the end of Fiscal Year 2008-09. AHEC sold a Beechcraft Baron in August 2009, the Department of Commerce sold a Beechcraft King Air in October 2009, and the Department of Transportation sold a Cessna Conquest II 441 in January 2010. The Departments of Commerce and Transportation share a hangar at Raleigh-Durham Airport.

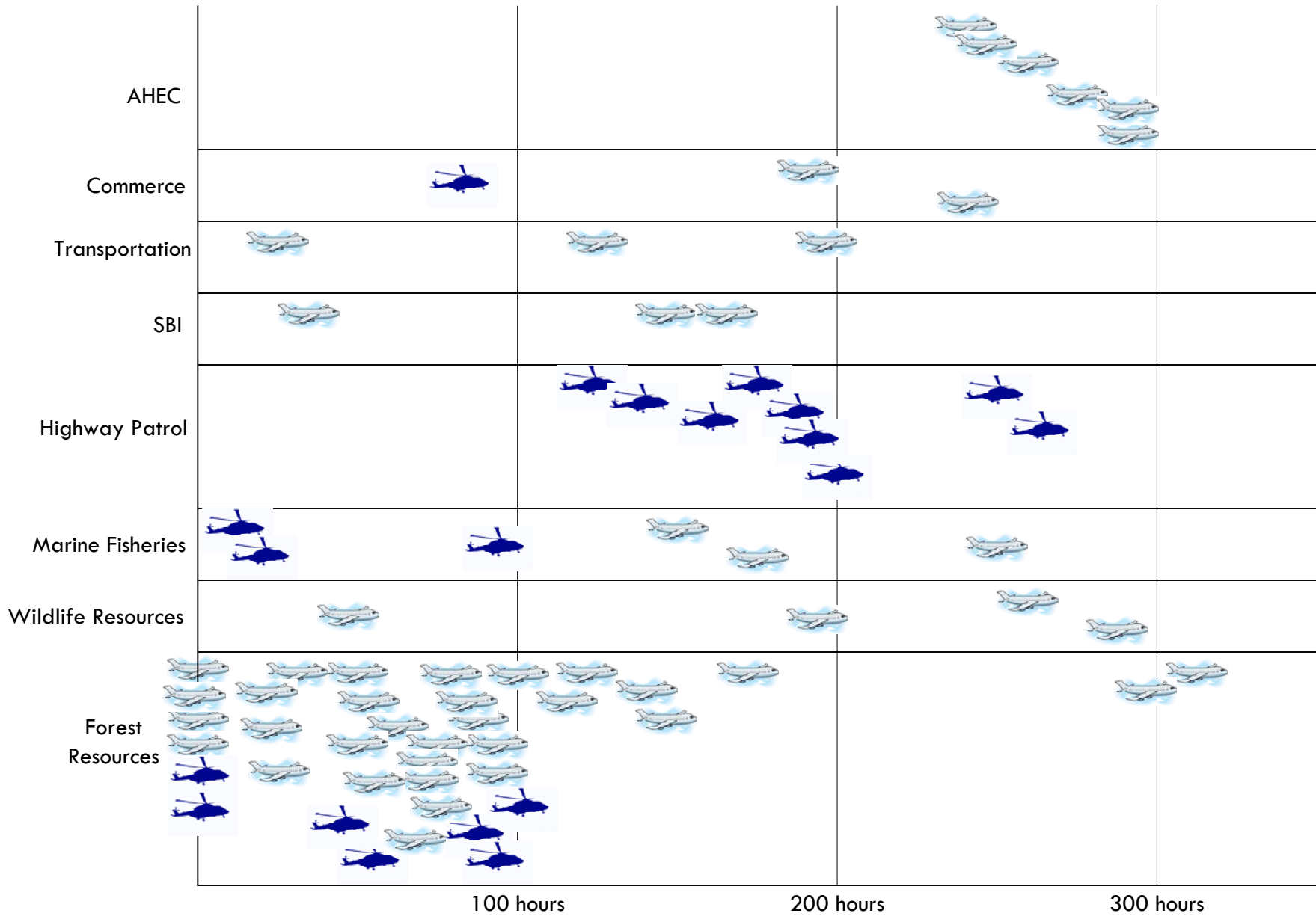
Source: Program Evaluation Division based on data provided by state programs.

# Location of 27 Hangar Facilities for State Aircraft, Fiscal Year 2008-09



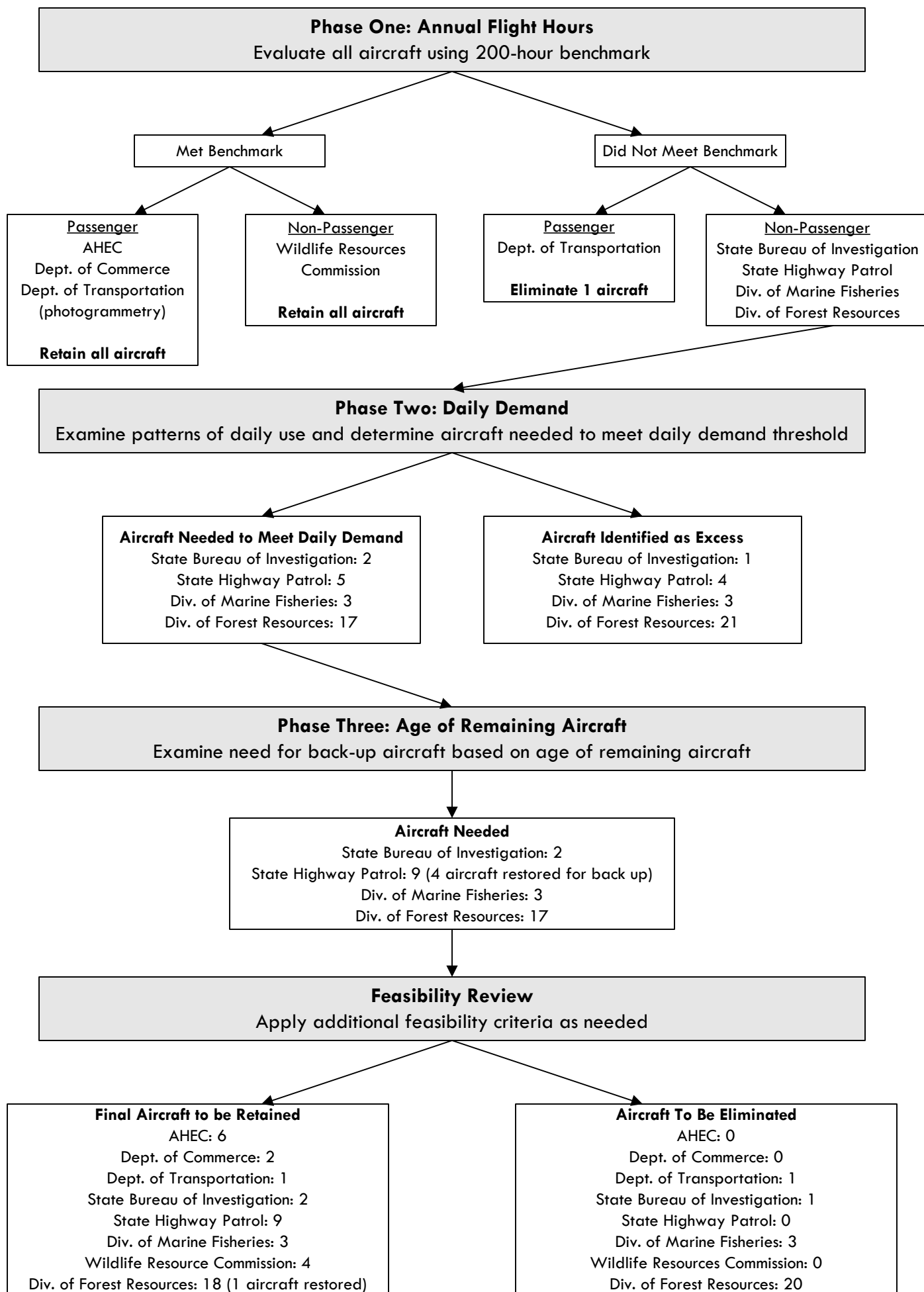
Source: Program Evaluation Division based on data provided by state programs.

# Average Annual Flight Hours by Aircraft, Fiscal Year 2006-07 to 2008-09



Source: Program Evaluation Division based on flight data provided by state programs.

# Flowchart of Three Phase Analysis for Aircraft Elimination



## Most Aviation Programs Lacked Important Management Practices

Management Practice	Passenger Transport			Law Enforcement				Resource Protection
	AHEC	Dept. of Commerce	Dept. of Transportation	State Bureau of Investigation	State Highway Patrol	Marine Fisheries	Wildlife Resources Commission	Forest Resources
Electronic flight logs	◐	○	○	○	●	○	○	○
Electronic maintenance records	○	●	●	○	●	○	○	○
Electronic tracking, forecasting, and scheduling maintenance	●	●	●	○	●	○	○	◐
Integrated electronic maintenance and flight information	○	●	●	○	●	○	○	○
Inventory tracking	●				●			◐
Cost per hour calculations	◐	○	◐	○	●	○	●	○
Maintenance cost by aircraft	●	●	●	○	●	●	●	○
Long-term replacement plan	○	○	●	○	●	○	○	◐
● = Full implementation      ◐ = Partial implementation      ○ = Does not exist								
Notes: AHEC stands for the University of North Carolina's Area Health Education Centers. The Division of Marine Fisheries, State Bureau of Investigation, and Wildlife Resources Commission do not have a maintenance program and therefore do not maintain inventory. The Department of Commerce has service contracts with aircraft manufacturers and does not maintain inventory. The two aircraft owned by the Department of Transportation are still under warranty.								

Source: Program Evaluation Division based on information provided by state programs.